



Calcasieu Parish Sheriff's Office

TONY MANCUSO, SHERIFF AND EX-OFFICIO TAX COLLECTOR

Parish of Calcasieu • 5400 E. Broad Street • Lake Charles, LA 70615
Phone (337) 491-3700 • Fax (337) 494-4522

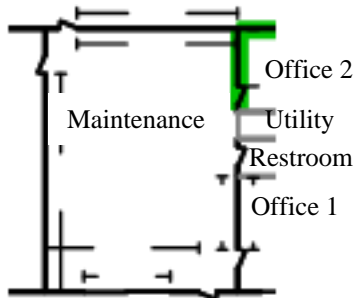
February 18, 2021

ADDENDUM #1

Maintenance Building (Asset #001-003)

NOTE: The following clarifications, changes, additions or deletions to the Specifications shall hereby be incorporated into the Contract Documents for the above referenced project. This addendum supersedes all contrary and conflicting information contained in previous Addenda, Drawings and Specifications and are hereby amended. Bidders shall acknowledge receipt of all Addenda in the space on the Bid Form.

MAINTENANCE AREA



General

1. Remove & Replace 1/2" - drywall per LF - 73.17 LF
up to 2' tall
2. Seal/prime then paint the surface area (2 coats) 73.17 SF
3. Paint the room - one coat 512.17 SF
4. Remove & Replace Baseboard - 3 1/4" 36.58 SF
5. Paint baseboard - one coat 36.58 SF

Contractor is responsible to field verify all dimensions and penetrations.

Office 1

1. Detach & Reset Suspended ceiling tile - High grade - 2' x 4'	184.72 SF
2. Paint the surface area - one coat	440.00 SF
3. Seal block with masonry sealer	220.00 SF
4. Stain & finish door slab only (per side)	2.00 EA
5. Paint door/window trim & jamb - 1 coat (per side)	2.00 EA
6. Detach & Reset Lockset - keyed - Medium duty - Commercial grade	1.00 EA
Trim	
7. Paint baseboard - one coat	55.00 LF
Flooring	
8. Remove & Replace Carpet tile	184.72 SF

Restroom

9. Detach & Reset Suspended ceiling grid - High grade - 2' x 4'	57.36 SF
10. Remove & Replace Suspended ceiling tile – Premium grade - 2' x 4'	57.36 SF
11. Seal block with masonry sealer	39.33 SF
12. Remove & Replace Wood door - birch face, solid core	1.00 EA
13. Detach & Reset Lockset - keyed - Medium duty - Commercial grade	1.00 EA
Plumbing	
14. Remove & Replace P-trap assembly - ABS (plastic)	1.00 EA
15. R&R Plumbing fixture supply line	3.00 EA

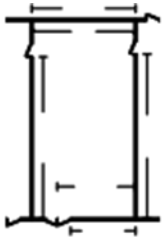
Utility Room

16. Paint the room - one coat	162.83 SF
17. Remove & Replace Ceramic/porcelain tile	117.88 SF

Office 2

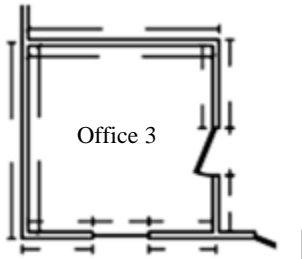
18. Detach & Reset Lockset - keyed - Medium duty - Commercial grade	1.00 EA
19. Remove & Replace Carpet tile	142.13 SF

Contractor is responsible to field verify all dimensions and penetrations.



Boiler Room

20. Clean floor 695.08 SF



Office 3

- 21. Remove & Replace Fluorescent - four tube - 4' - fixture w/lens 1.00 EA
- 22. Remove & Replace Heat/AC register - Mechanically attached 1.00 EA

Contractor is responsible to field verify all dimensions and penetrations.

END OF ADDENDUM